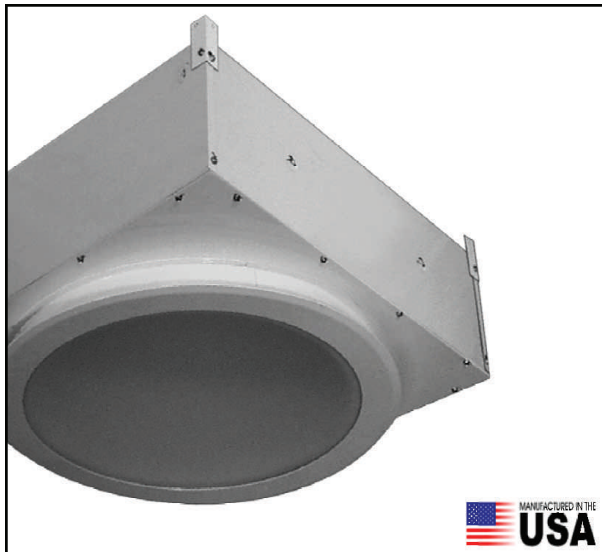


# LED ROUND RECESSED



**FIXTURE TYPE** \_\_\_\_\_  
**JOB NAME** \_\_\_\_\_  
**REP** **HUDNUT LED LIGHTING**  
**PART NUMBER** \_\_\_\_\_

## SPECIFICATIONS

Full fixture replacement with linear LED lamps*	High 80+ CRI white LEDs*
120—277 volt AC operation	>50,000 hour lamp life to 70% original output*
No external ballasts, drivers, or power supplies = lower maintenance	Lamp is UL listed 120-277VAC*
Standard G13 bi-pin sockets for easy lamp maintenance	Fixture is ETL listed
Lamp powered from one end only to meet UL safety requirements*	and conforms to UL 1958-SUB 8750
Dedicated LED fixture ensures proper operation and maximum life	Fixture is made in the USA
Instant on to full light output even in cold environments*	2 year limited warranty on fixture
Operates from minus 40 degrees F. through plus 122 degrees F.*	5 year limited warranty on lamps*
No mercury, no lead, no glass	Fixture and lamps are recyclable
Emergency battery back-up capable—call or email for info.	See reverse for additional fixture information.

## ORDERING INFORMATION

SERIES	LAMP ROWS	DIAMETER	LAMP TYPE	OPTICAL	MECH OPT	ELEC OPT	TYPE	VOLTS	LAMP COLOR*	LAMP LENS*
RER100	1 (2' only)	2'	LR = UL listed	FWA	X = none	X = none	LED81	UNV	3500k	CL = clear
	2 (2' & 3' only)	3'		(SEE REVERSE FOR INFO)	DL = damp loc.	TS2 = maint. switch			4100k	FR = frost
	3 (2' & 3' only)	4'							5500k	
	4 (all sizes)									
	6 (4' only)									
	8 (4' only)									

## NOTES

**\*\*\*Other options are available. Contact Hudnut LED Lighting Solutions for additional information**  
**Product may differ slightly from photo. All values are nominal.**

**\*See TL-SH series lamp cut sheet for additional information. Lamps are shipped separately for field installation.**

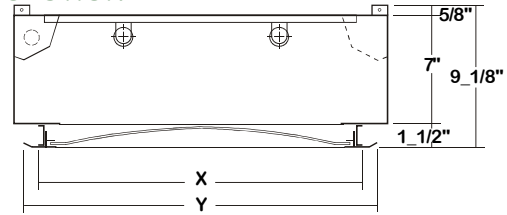
# HUDNUT LED LIGHTING

11916 NE SUMNER STREET PORTLAND, OREGON 97220 503-233-8088 WWW.HUDNUT.COM INFO@HUDNUT.COM

# RER100 SERIES - LED T8



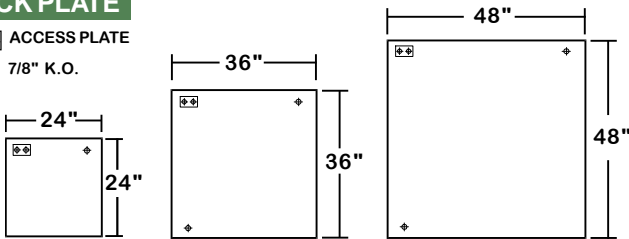
## CROSS SECTION



<b>2' ROUND</b>	Ceiling Opening Diameter	X = 21 1/4"
	Flange Overall Diameter	Y = 22 3/4"
<b>3' ROUND</b>	Ceiling Opening Diameter	X = 33 1/4"
	Flange Overall Diameter	Y = 34 3/4"
<b>4' ROUND</b>	Ceiling Opening Diameter	X = 45 1/4"
	Flange Overall Diameter	Y = 46 3/4"

## BACK PLATE

ACCESS PLATE  
7/8" K.O.



## SAFETY SWITCH



### TS2 - LED Luminaire On/Off Safety Switch

- Easily accessible on exterior of wire way.
- Allows individual fixture to be switched ON/OFF during re-lamping or Maintenance.
- Prevents damage to lamp and electrical shock during lamping and re-lamping.
- Allows safe entry to wire way channel where power connector can be disconnected for maintenance to fixture.

## CATALOG NUMBER

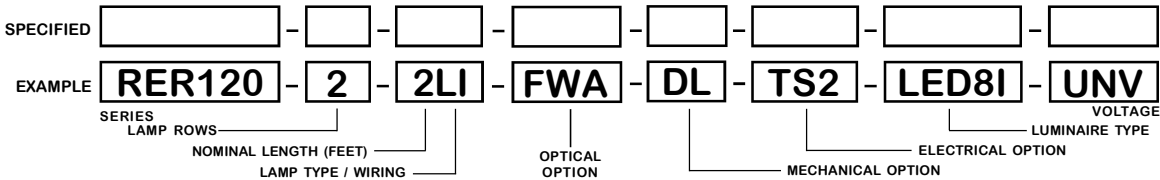
### TWO FOOT ROUND

### THREE FOOT ROUND

### FOUR FOOT ROUND

	NOMINAL WIDTH	TOTAL LAMPS		NOMINAL WIDTH	TOTAL LAMPS
RER130-2-3LI	3'	2	RER140-4-2LI	4'	4
RER130-2-3LR	3'	2	RER140-4-2LR	4'	4
RER130-3-3LI	3'	3	RER140-6-2LI	4'	6
RER130-3-3LR	3'	3	RER140-6-2LR	4'	6
RER130-4-3LI	3'	4	RER140-8-2LI	4'	8
RER130-4-3LR	3'	4	RER140-8-2LR	4'	8

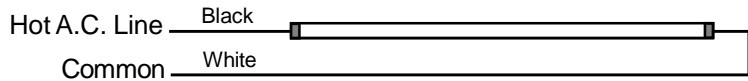
## ORDERING GUIDE



## LAMP TYPE

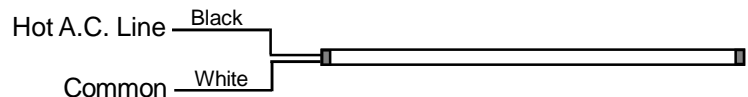
**LI = LED T8 light tube, self-driven.**

Black lead (Hot A. C. line) connected to one end of the light tube, and white lead (Common line) connected to the other end.



**LR = LED T8 light tube, self-driven.**

Black lead and white lead connected to the same end.



## OPTIONS AND ACCESSORIES

### ELECTRICAL OPTIONS

- LED Luminaire ON/OFF Safety Switch
- Pull Switch
- 6' 3Wire Cord + Plug (U-Ground)

SUFFIX  
TS2  
PS1  
CP3

### OPTICAL OPTIONS

- Frosted White Acrylic Dome

SUFFIX  
FWA

### MECHANICAL OPTIONS

- Damp Location
- Hanger Yokes (2')
- Hanger Yokes (3')
- Hanger Yokes (4')

SUFFIX  
DL  
HS-24 1/2  
HS-36 1/2  
HS-48 1/2

\*See Appropriate Reference Page

## SPECIFICATIONS

- TYPE
- DOOR FRAME
- OPTIC
- CONSTRUCTION
- FINISH
- WIRING
- LABELS

Recessed mounted flanged luminaire with round aperture for LED T8 light tube (s)\*\* with internal driver.  
Die formed 20 gauge CRS. Attaches to housing by torsion springs.  
Frosted white acrylic dome diffuser standard.  
22 ga. cold rolled steel housing. (20 ga. housing available as specified)  
Baked white polyester finish, minimum reflectance 86%. (Powder coated finish available.)  
Operates T8 LED light tube(s)\*\*.  
ETL Listed. Conforms to UL standard 1598 - SUB 8750.

\*\* Lamp(s) by others.

